

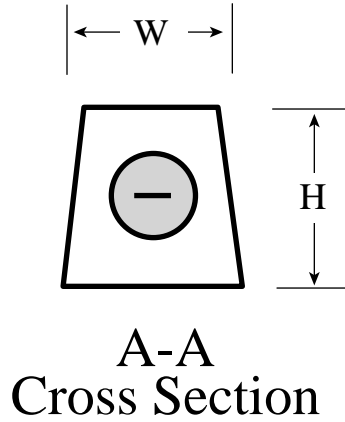
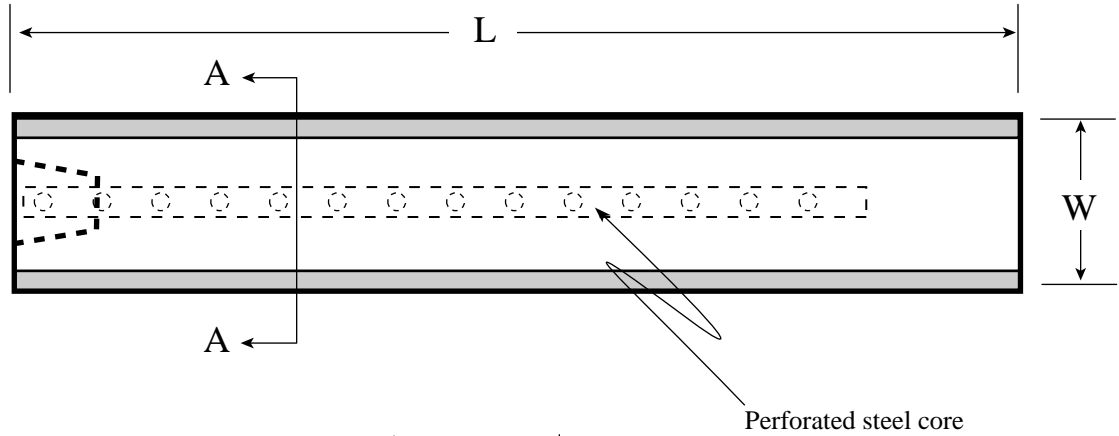
**M&M Industries, Inc.**  
 800 West Front Street, Chester, PA 19013  
 Tel (610) 447 0663 ~ Fax (610) 447 0994

P.O. Box 1439, Amite LA 70422  
 Tel (985) 748 6651 ~ Fax (985) 748 6671

**MAGNESIUM ANODE**

**High Potential**

Top View



<i>High Potential Alloy</i>	
Al	0.010% max.
Zn	< 0.001%
Mn	0.50 - 1.30%
Si	< 0.001%
Cu	0.02% max.
Ni	0.001% max.
Fe	0.03% max.
Mg	Remainder

Other sizes available

<i>Part No.</i>	MM-1HP	MM-3HP	MM-5HP	MM-9HP	MM-17HP	MM-20HP	MM-32HP	MM-48HP	
<b>Dimensions</b>	<i>L</i>	8"	4½"	7½"	13½"	25½"	60"	21"	31"
	<i>W</i>	Ø	3"	3"	3"	3"	2"	5"	5"
	<i>H</i>	1"	3"	3"	3"	3"	2"	5"	5"
<i>Nominal weight</i>	1 Lbs.	3 Lbs.	7 Lbs.	9 Lbs.	17 Lbs.	20 Lbs.	32 Lbs.	48 Lbs.	

*All weights and dimensions are nominal. Ø = Diameter*

Not to scale

**THE RIGHT PRODUCT • THE RIGHT TIME • THE RIGHT PRICE**