

**M&M Industries, Inc.**

800 West Front Street

Chester, PA 19013

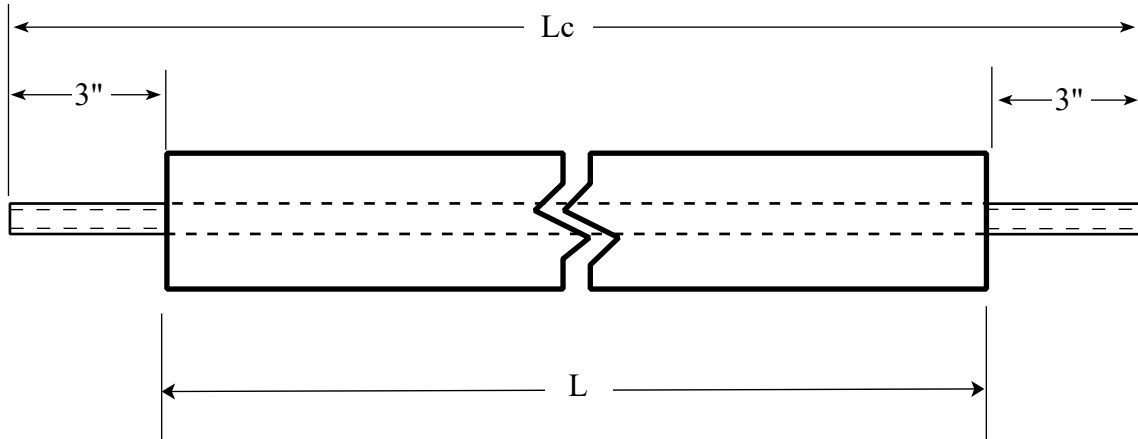
Tel (610) 447 0663 Fax (610) 447 0994

Website: [www.mmanodes.com](http://www.mmanodes.com)

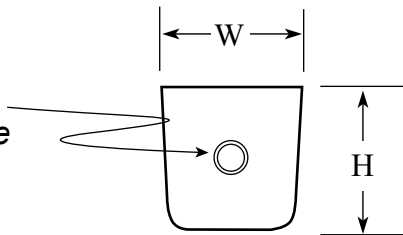
**ZINC ANODE**

*Pier & Piling PZ Series*

Top View



$\frac{3}{4}$ " Pipe core shown here  
Other core types available



End View

*Recommended*

$\frac{1}{2}$ " dia. eyebolt in anodes up to 200 Lbs.;  $\frac{3}{4}$ " over 200 Lbs.

$\frac{3}{4}$ " standard pipe in anodes up to 250 Lbs; 1" over 250 Lbs.

Type "E": EYEBOLT ( $\frac{1}{2}$ " or  $\frac{3}{4}$ " dia.)

Type "P": PIPE ( $\frac{3}{4}$ " or 1" standard pipe)

Type "R": ROD ( $\frac{1}{2}$ " rod)

Part No.:		MM-PZ-50	MM-PZ-100	MM-PZ-150	MM-PZ-250	MM-PZ-375	MM-PZ-500
<b>Dimensions</b>	$L_a$	48"	44"	36"	60"	24"	24"
	$L_c$	54"	50"	42"	66"	30"	30"
	$W$	2"	3"	4"	4"	7"	9"
	$H$	2"	3"	4"	4"	7"	9"
Nominal weight		50 Lbs.	100 Lbs.	150 Lbs.	250 Lbs.	375 Lbs.	500 Lbs.

Not to scale

**THE RIGHT PRODUCT · THE RIGHT TIME · THE RIGHT PRICE**